

GENERAL SAILING INSTRUCTIONS

Alberg 30 50th Anniversary Regatta Sunday August 10, 2014

Alberg 30 Class Association / Sailing Club of the Chesapeake

1. RULES

1.1 The regatta will be governed by the rules as defined in the current Racing Rules of Sailing (RRS). In the event of any conflict between the NOR, General Sailing Instructions and Attachments the precedence shall be reverse order of this listing. This changes RRS 63.7.

1.2 This race will be a non-spinnaker race. The only sails permitted will be the Main Sail, and all Genoas 170% or smaller.

2. NOTICES TO COMPETITORS

3 CHANGES TO SAILING INSTRUCTIONS

3.1 Any change to the sailing instructions will be posted before 0900 on the day it will take effect, except that any change to the schedule of races will be posted by 2000 on the day before it will take effect.

4 SIGNALS MADE ASHORE

4.1 All signals will be made from the committee boat.

4.2 When flag AP is displayed ashore, '1 minute' is replaced by 'not less than 60 minutes'. This changes RRS race signals.

4.3 Flag "L" (black and yellow check) over a numeral pennant means notice number [the number of the pennant] has been posted. This changes RRS race signals.

4.4 Flag "N" (white and blue small check) over "A" (white and blue vertical stripe) and 3 sounds, all racing is cancelled.

5 SCHEDULE OF RACES

5.1 Rendezvous is at 1100 hrs. The Alberg 30 fleet will rendezvous at Red Nunn 8 at the mouth of the Severn River.

5.2 A race committee boat will display flag "L", accompanied by a sound signal, then proceed to the starting area.

5.3 The warning signal for the first race of the day is intended to be made at 1130 hrs.

5.4 No warning signal will be made after 1330 hrs.

6 CHECK IN

6.1 Each boat that competes shall sail by the Committee Boat, hail her sail number and be acknowledged by the committee. This shall be done before the warning signal of the race.

7 COURSES, STARTING, RECALLS

7.1 See Attachment A for further details, including courses, mark descriptions, starting, and finishing.

8 RECALLS

8.1 The race committee may attempt to notify boats identified as on the course side by announcing their sail numbers on VHF Channel 72. Failure to transmit or receive such notification will not be grounds for redress. This changes RRS 62.

9 PENALTY SYSTEM

9.1 The turns penalties of RRS 44.1 shall apply.

10 TIME LIMITS

10.1 Time limit shall be 2 hours after the start, or 1330 hours, whichever comes first.

10.2 If at least one boat meets the requirements of RRS 35, then a boat still racing at the time limit will be scored two more points than the number of boats which did finish and will be given a scoring abbreviation of TLE (Time Limit Expired). This changes RRS 35, A4 and A5.

11 PROTESTS AND REQUESTS FOR REDRESS

11.1 The protest time limit is 60 minutes after the RC signal boat docking time.

11.2 The protest time limit and hearing schedule will be posted on the official notice board at AYC.

11.3 RRS 61.1(a) is changed to require: "Notice of intent to protest and the racing number of the protested boat shall be given to the race committee promptly upon finishing by hail acknowledged by the committee. A boat intending to protest but retiring before finishing shall notify the race committee of her intent and the racing number of the protested boat at the first reasonable opportunity."

12 SCORING

12.1 One completed race shall constitute a series.

13 SAFETY REGULATIONS

13.1 Each boat shall carry a VHF radio capable of communicating on channels 9, 13, 16, 69, 72 and 65A.

13.2 A boat that retires from a race, or leaves the racing area between races, shall notify the race committee at the first reasonable opportunity.

13.3 A boat may not exercise right of way, cross in proximity to, or interfere with reasonable transit of the race area by commercial ships, tugs, or barges. Boats must take evasive action well in advance of a potentially dangerous situation. The US Coast Guard, ship captains, and bay pilots have been encouraged to report any incident they observe.

13.4 Boats shall not enter U.S. Coast Guard "Exclusion Zones." Such zones rank as "obstructions".

13.5 The race committee or protest committee may protest a boat for breaking SI 13.3 based on information received from any source. The protest time limit does not apply. This changes RRS 60.2, 60.3, and 61.3.

13.6 Boats may not protest other boats for breaking SI 13.3. This changes RRS 60.1.

14 INLAND RULE

14.1 A boat which may have broken a rule of the Inland Rules may be subject to a report to the USCG or DNR, may be referred to the Sailing Club Protest Committee or may be subject to a RRS 69 (Gross Misconduct) hearing by the Protest Committee.

15 RADIO COMMUNICATIONS

15.1 The race committee may make courtesy announcements on VHF Channel 72.

16 PRIZES

16.1 Prizes will be awarded to the top 3 boats at the Awards Party which is scheduled to begin at 1430 at the National Sailing Hall of Fame pier in Annapolis.

17 DISCLAIMER OF LIABILITY

17.1 Competitors participate in the regatta entirely at their own risk. See RRS 4, Decision to Race. The organizing authority will not accept any liability for material damage or personal injury or death sustained in conjunction with or prior to, during, or after the regatta.

18 INSURANCE

18.1 Each participating boat shall be insured with valid third-party liability insurance with a minimum coverage of \$300,000 (US\$) per incident or the equivalent.

Attachment A

Courses for Alberg 30 Old Timers Race, Sunday August 10, 2014

Please consult chart 12283, "Annapolis Harbor"

Courses will be posted on the Committee Boat

All marks are Severn River Channel Markers

Course A

Start at Red Nun "8" between that buoy and a yellow or green flag on the committee boat.

Round Green lighted buoy "5" to port

Round Red Nun "14" to port

Finish between Red Nun "8" and a green or yellow flag on the committee boat.

Course B

Same as Course "A," twice around.

Course C

Same as Course "A," in reverse, i.e.:

Start at Red Nun "8" between that buoy and a yellow or green flag on the committee boat.

Round Red Nun "14" to port

Round Green lighted buoy "5" to port

Finish between Red Nun "8" and a green or yellow flag on the committee boat.

Course "D:"

Same as Course "C," twice around.

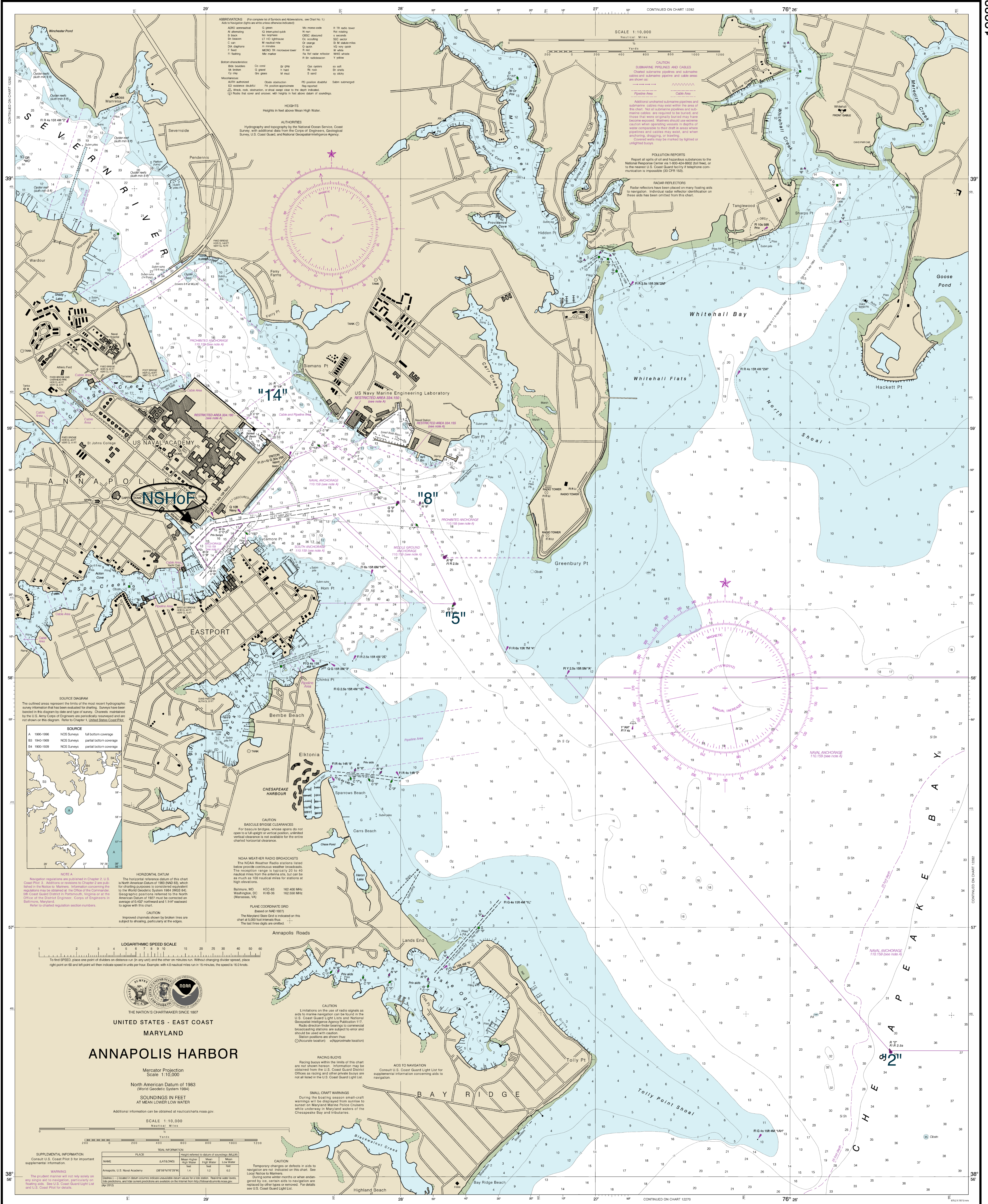
Course "E:"

Start at Red Nun "8" between that buoy and a yellow or green flag on the committee boat.

Round Red Lighted buoy "2" to port

Finish between Red Nun "8" and a green or yellow flag on the committee boat.

This historical chart has been designed to comply with regulations. The National Ocean Service encourages users to submit corrections, additions, or comments for improving this chart to the Chief, Marine Chart Division (NCS), National Ocean Service, NDA, Silver Spring, Maryland 20910-3305.



Published at Washington, D.C. U.S. DEPARTMENT OF COMMERCE NATIONAL OCEANIC AND ATMOSPHERIC ADMINISTRATION NATIONAL OCEAN SERVICE COAST SURVEY

This chart was distributed as a PDF (Portable Document Format). Printing PDFs may alter the chart scale, color, or legibility that may impact suitability for navigation. Printed charts provided by NOAA certified Print on Demand (POD) providers fulfill a vessel's requirement to carry a navigational chart published by the National Ocean Service in accordance with federal regulations, including but not limited to 33 C.F.R. 164.33(a), 33 C.F.R. 164.72(b), and 46 C.F.R. 28.225(a). POD charts meet stringent print standards and can be recognized by an official certification of authenticity printed on the chart. A list of POD providers can be found at nauticalcharts.noaa.gov/pod